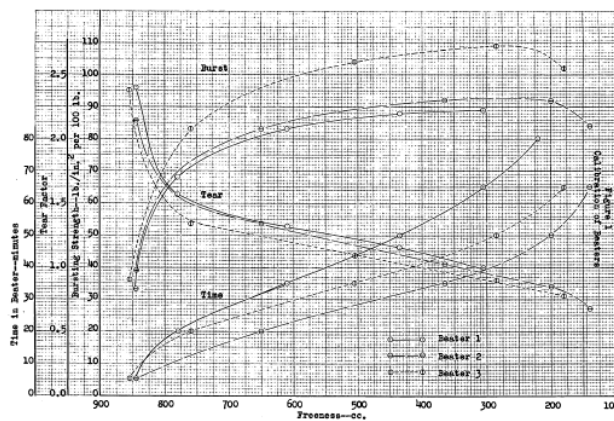
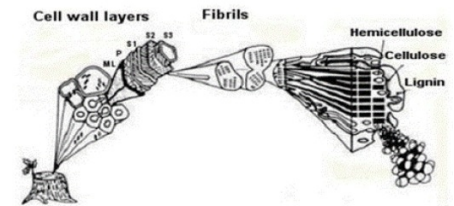
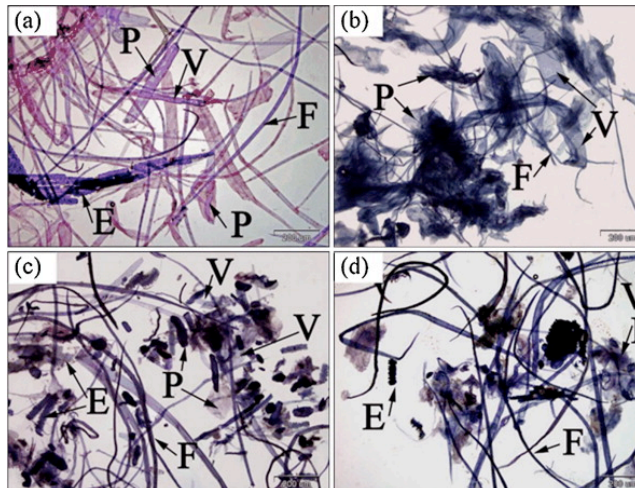
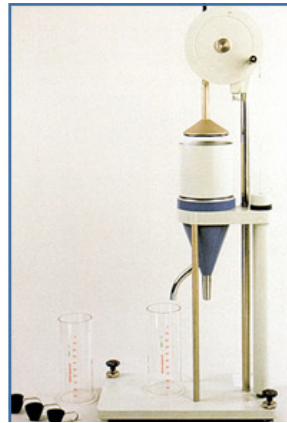


Hands-On Papermaking



Hands-On Papermaking

“Focus on Fibres”

“Focus on Fibres” is one of the modules from the **Hands-On Papermaking** series of practical experiences from TWA PD Ltd aimed at production and technical people in the UK papermaking industry and is designed to complement our other development programmes.

Benefits

Participants will benefit from a deeper understanding of the morphology of fibres, the physics of fibre treatment, fibre formation and the impact upon final sheet properties. They will see first-hand what is happening at the microscopic level which ultimately manifests itself on the parent reel.

A greater understanding of the underlying principles of the science of papermaking will lead to a more considered and effective use of resources when bringing their process and product back in control after a period of instability.

Programme

The equipment and images depicted on the front page will be utilised in a structured manner to create a journey of discovery which will underpin all of the knowledge and experience already possessed by participants. After a thorough induction into the papermaking laboratories and the equipment at their disposal, they will run trials using different pulps, beaten to different degrees of wetness and formed into handsheets. Basic properties will be tested, results plotted, conclusions drawn and presentation of results made. For images from Series 1, visit <http://www.paperclassroom.com/HOP.html>

Trainers

Delivered by recognised industry specialists who have spent a lifetime learning and applying their knowledge in mills and educational centres.

Duration of Course, Date & Venue

The course will be an intensive five days, held in the technical laboratories of a UK paper mill, during w/c 28th April.

Investment

Your investment is £950 per participant, plus VAT, and is inclusive of all course materials.

Where overnight accommodation is required then companies are required to arrange this for their own people and settle any bills accordingly. We will offer hotel suggestions.

Delegate Numbers

Numbers are strictly limited to 9 persons to foster an optimal learning environment.

Booking

For further information and to book places, please contact **TWA People Development Ltd** on 01227 379920, 07834 712092, tw@twapd.com